



Dragages Ports is an active member of the ADPF – Association for the Development of French Ports.

www.port.fr

Dragages Ports group decided to supply one of its largest vessels with **Xbee** fuel to preserve the ship equipments, to enhance their working and to preserve our environment.



Daniel Laval

Technical specifications of the *Daniel Laval* :

Built in 2002 in Vosta LMG/Izar, Gijon (Spain).

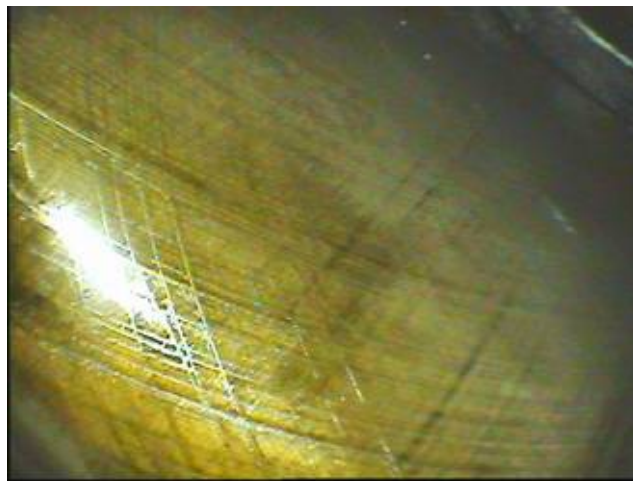
- Length: 104 meters
- Engines: 2 Wärtsilä 9L26A
- Total power: 5 650 Kw
- Fuel tank capacity: about 750 tons
- Loading capacity: 5,000m³



Since June 2006, after only a few months a clear exhaust smokes reduction was remarkable, also less plugging of the injectors and piston heads.



*Main starboard engine 2.925 kW
Wärtsilä*



Extract from an endoscopic study by **Wärtsilä** dated on 3rd June 2008, representing the inside of a jacket . . . after 16,000 hours of work!

The company confirms a neat fuel consumption economy of -7%.

Engines and fuels guarantees:

× **Xbee** is recognized by some of the most important marine engines manufacturers.



× On the other hand, **Xbee** respects the European regulation EN 590 Diesel norm and CSR 500 IFO 380 norm.

GIE Dragages Ports

Sylvain le Dantec (Directeur Technique)

Sas Quinette de Rochemont

F-76600 Le Havre

+33 (0)2 32 74 51 57

s.ledantec@dragages-ports.fr

<http://www.dragages-ports.fr>